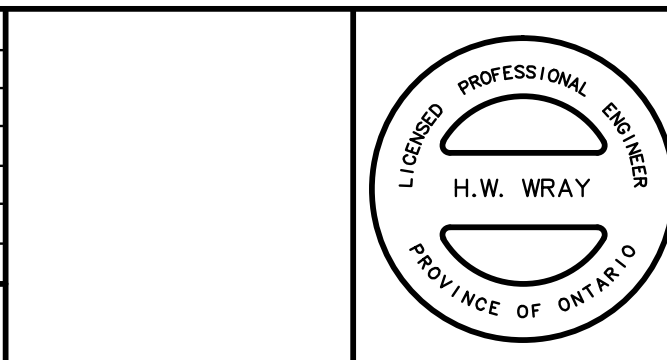


- NOTES:**
- 333, 363, 393, Denotes Pavement Marking Spacing (ie., 3 m line, 3 m gap, 3 m line)
 - Use ① to Denote PAVEMENT MARKING
 - Use ① to Denote PAVEMENT MARKING, TEMPORARY
 - Use △ to Denote PAVEMENT MARKING, TEMPORARY- REMOVABLE
 - Use ① to Denote PAVEMENT MARKING, DURABLE

LEGEND	
1 SOLID YELLOW,10cm	10 111 BROKEN WHITE,20cm
2 SOLID DOUBLE YELLOW,10cm	11 333 BROKEN WHITE,20cm
3 363 BROKEN YELLOW,10cm	12 333 BROKEN WHITE ,30cm
4 SOLID YELLOW,20cm	12a 111 BROKEN WHITE ,30cm
5 SOLID WHITE,10cm	13 SOLID WHITE,30cm
6 333 BROKEN WHITE,10cm	14 SOLID WHITE,45cm
7 363 BROKEN WHITE,10cm	15 SOLID WHITE,60cm
8 393 BROKEN WHITE,10cm	20 SYMBOLS
9 SOLID WHITE,20cm] [LIMITS OF MARKINGS

NOTES

03	FEB 2016	INTERSECTION REVISED MCLEAN WEST	H.W.W.
02	SEPT 2015	ISSUED FOR CONSTRUCTION	H.W.W.
01	JULY 2015	ISSUED FOR TENDER	H.W.W.
No	DATE	REVISION	INITIAL



RECONSTRUCTION OF WELLINGTON ROAD 46
 FROM HWY 401 TO NORTH OF MCLEAN ROAD

COUNTY OF WELLINGTON
 74 WOOLWICH STREET
 GUELPH, ONTARIO N1H 3T9
PAVEMENT MARKING & SIGNAGE PLAN
 STA. 1+510 TO STA. 2+240

PROJECT No: CW2015-039
 TRITON FILE No: M6386
 DRAWN BY: K.J.G.
 CHECKED BY: G.J.K.
 APPROVED BY: H.W.W.
 DATE: MAY 2015



SCALES	
1:500	N/A
HORIZONTAL	VERTICAL
DRAWING NUMBER	16